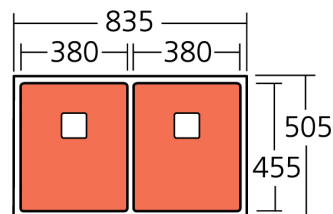


# Oliveri®

## Model: PR1163U



### FEATURES

- Large capacity bowls**  
 For soaking a feast of baking dishes or oven trays, with bowls up to 46 litres in capacity.
- 1.5mm brushed stainless steel**  
 Provides a low profile edge and creates a streamlined look that integrates with modern appliances.
- Softtone® and sound proofing**  
 Ensures improved heat retention with a sound deadening finish.
- Easy clean 10mm radius corners**  
 Softly squared 10mm radius corners are hygienic and easy to clean.
- Waste adaptor (Optional ACSWDK)**  
 Allows the square waste to connect with Insinkerator disposal units.

### INCLUDED ACCESSORIES

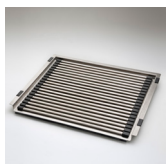


**AC175Q**  
Basket waste kit

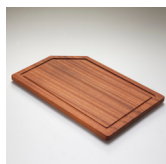


**ACP5Q5**  
Bowl protector

### MATCHING ACCESSORIES



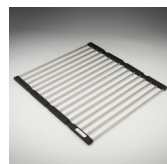
**ACP110**  
Bench top drainer set



**ACP126**  
Chopping board



**ACSWDK**  
Adaptor flange



**ACP105**  
Foldamate



**ACP31**  
Drainer basket

### RECOMMENDED TAPWARE



**VT0389B**  
WELS 4 star  
6.5L per min



**SS2540**  
WELS 4 star  
7.5L per min

### SPECIFICATIONS

#### Description

Professional Series double bowl undermount sink

#### Sink Size

835W x 505H

#### Standard Bowl

380W x 455H x 225D / 39L

#### Standard Bowl

380W x 455H x 225D / 39L

#### Construction

Fabricated with 10mm radius corners, Softtone® and soundproofing.

#### Material

304 grade, 18/10 brushed stainless steel (1.5mm thick)

#### Installation

Undermount

#### EAN

9324974007072

#### Fixings

Undermount clips supplied

#### Cut out template

Refer to oliveri.co.nz

#### Min cabinet size

900mm

#### Tap holes

N/A

#### Waste fittings

2 x 90mm basket wastes included

#### Overflow

N/A

#### Carton size

920 x 575 x 290 mm

#### Weight

17.0 kg

#### Warranty

Lifetime manufacturer's warranty (refer to oliveri.co.nz)



For more information call **0800 440 606** or visit **oliveri.co.nz**