

HYDROTAP G5 C40 CUBE PLUS CHROME



CHILLED

FILTERED

Order Code H5C710Z00NZ

Zenith HydroTap Design Range Chilled, Filtered water system features a single under bench command centre including full colour interactive touch screen display with pin code protection and customisable settings including 3 energy saving modes including ON/OFF timers and 2 hour sleep mode, 'Quiet' mode with automated intelligent fan speed adjustment, SteriTouch® antimicrobial protection impregnated into key water paths for enhanced hygiene, 100% water efficient air cooled technology, and 0.2 micron water filtration. Easy to install integrated ventilation tray included.

Manufacturing Code	H5C710Z00NZ
--------------------	-------------

Capacity	Commercial
----------	------------

Number of people	21-40
------------------	-------

Chilled Cups per hour	125
-----------------------	-----



Tap	Zenith HydroTap Design Range CUBE Plus Tap (Chrome)
Water Pressure	Min 170kPa - Max 700kPa
Water Connection	1/2" BSP (G1/2)
Water Supply Requirements	Cold
Water Valves	Integrated 500kPa Pressure limiting valve and Dual Check Valve
Power Rating	0.155kW 220-240V 50Hz
Power Supply	1 x 10 Amp socket outlet
Dimensions	W280mm x D476mm x H333mm
Product Approvals	WaterMark, RCM, ARC
Warranty	5 years (appliance warranty 36 months plus additional 24 months tank warranty)

Installation Requirements

1. Installation and connection of your Zenith HydroTap must be carried out by a qualified person, observing national and local regulations. 2. You will require suitable mains electrical and drinking water connections, plus waste water drainage all within 1.5 metres of the product. 3. HydroTap is air-cooled so discrete cabinetry cut-outs are required for ventilation. 4. Installation on most bench tops is straightforward however some stone bench tops may require a specialised cutting service. 5. If you live in a hard water area, we recommend installation of a Zenith scale filtration kit. 6. Installation by Zenith Professional Service can be arranged with a phone call or through www.Zenithwater.com

Installation Detail

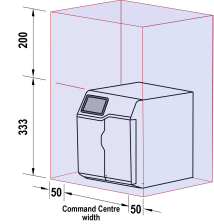
BKL2 HydroTap G5 v1.10.07.04 C40 C100



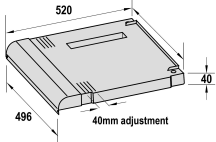
Ventilation requirements Contact your local service provider if ventilation is not suitable

Clearance envelope

Position the Tap and the Command Centre as close together as possible.

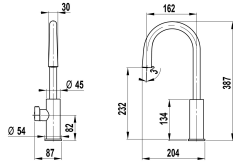


Vent tray (kit no. 93541)

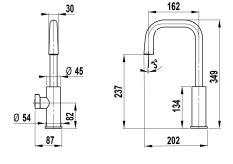


HydroTap Tap options

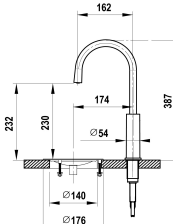
HydroTap Arc Plus Tap



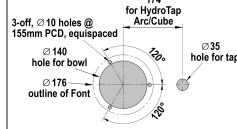
HydroTap Cube Plus Tap



Standalone Font with Arc Plus Tap



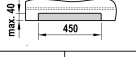
Cutting detail



Detail A. Air inlet grille
Cut-out in cabinet floor



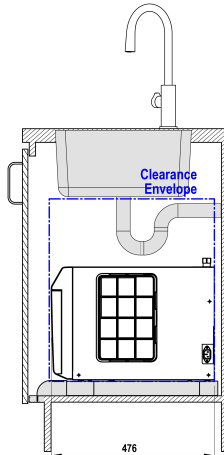
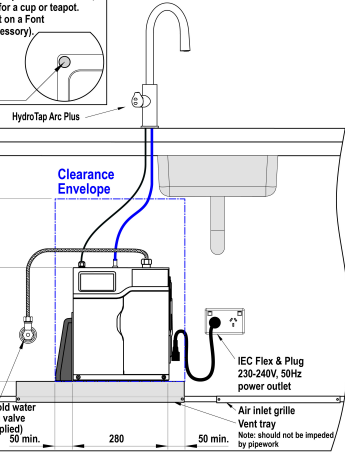
Detail B. Vent Tray air outlet
Cut-out in cabinet floor



Tap Positioning

Position the Tap to dispense into the sink, allowing clearance for a cup or teapot. Alternatively, mount on a Font (available as an accessory).

Ø35mm hole for HydroTap Plus Tap



SCALE 1:5
ALL DIMENSIONS IN MM UNLESS OTHERWISE SPECIFIED. INSTALLATION DIAGRAMS ARE FOR ILLUSTRATIVE PURPOSES ONLY. HOSES ARE NOT SHOWN TO SCALE AND CANNOT BE LENGTHENED.

**HydroTap G5
C40, C100**

shown with HydroTap Arc Plus