

Pedigree II Care

Accessible Application Installations

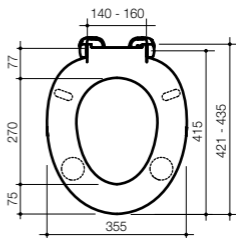
Closed Front.

A specialised single flap seat designed for persons with ambulant disabilities. Features die-cast metal hinges, heavy duty solid axle hinge and rotatable buffers for extra stability during sideways transfers. Blind fixings standard.

Colours: White, Blue or Grey.

Options	Code
Blind Fixings Standard	320030

Seat section



Pressalit

A seat for general purpose applications with smooth contours for user comfort and ease of cleaning.

Seat with standard chrome hinges. Blind fixing hinges option.

Colours: White only.

Options	Code
Standard with chrome hinges	816000
With blind fixing hinges	816100

