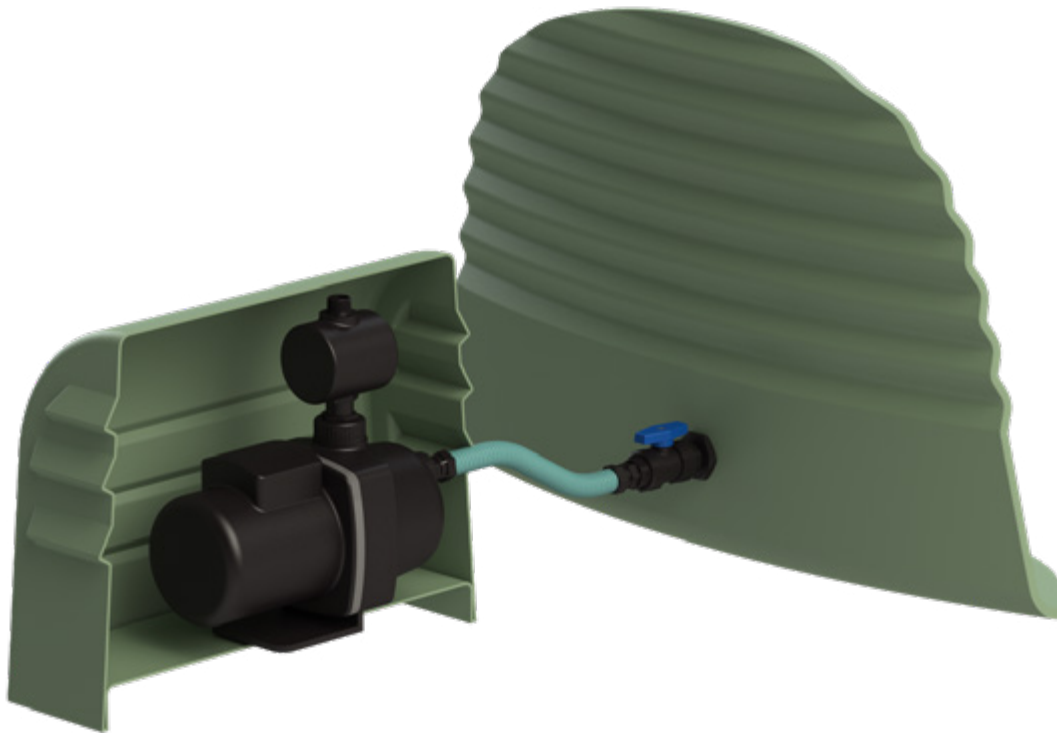




**Promax**  
LIQUID MANAGEMENT SOLUTIONS

## Promax Pump Cover Fitting Instructions

**Thank you for purchasing a Promax Pump Cover**



**Below are instructions for the most common way to install your Promax Pump Cover.**

1. Flip the plastic base tray upside-down and fit with concrete OR cut a piece of timber to fit inside the tray.
2. Once the concrete is dry, turn the tray over and bolt the pump into position on the tray.
3. Cut the cover to suit your fittings and then screw the cover to the tray.

